

## We're Here to Help

LMCH will continue to book treatments as long as necessary.

## Contact Us

If you have any questions about pest management, contact Property Services.

**Call:** 519-434-2765

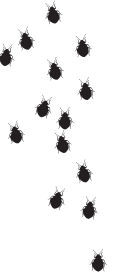
**Email:** [maintenancerepair@lmch.ca](mailto:maintenancerepair@lmch.ca)  
[www.lmch.ca](http://www.lmch.ca)

1299 Oxford St. E. Unit 5C5  
London, ON N5Y 4W5



# Bed Bugs

## Preparing for Treatment



LONDON &  
MIDDLESEX  
COMMUNITY HOUSING

## The Bed Bug



A mature bed bug is 5mm in length (1/5"). The image above is not to scale. Bed bugs multiply very quickly, so the longer you have them in your home, the larger the infestation.

## Preparation is Required

Under the terms of your lease agreement and the Residential Tenancies Act, it is your responsibility to prepare your unit for pest control treatment.

The success of any treatment requires thorough preparation. Call us immediately if you need help with supplies (bags, pet carriers) or if you need further assistance.

If you do not do everything on the checklist, or you refuse to let the pest technicians in, LMCH could charge you for the cost of the visit.

**IMPORTANT:** For your safety, you will need to leave your unit for at least six (6) hours once treatment begins.



## Preparation Checklist

Bed bugs can be found anywhere in your home: near the bed and nightstand, between books on a shelf, behind baseboards, and behind wall plates and light switches.

### **BEFORE TREATMENT DAY:**

- ☐ Empty closets, drawers and nightstands
- ☐ Put all clothing and linens into bags and seal
- ☐ Take sealed bags to the laundry room and empty into the dryer
- ☐ Discard these bags immediately and put in outdoor garbage bins or down the garbage chute
- ☐ Dry clothing and linens on high heat for 30-40 mins
- ☐ Place dried items in NEW bags and seal
- ☐ Do not discard furniture unless recommended by LMCH or the pest management company

### **ON TREATMENT DAY:**

- ☐ Remove all linens from your bed and put them into a bag and seal for drying in the laundry room
- ☐ Leave mattresses and sofa in place
- ☐ Remove pets
- ☐ Cover fish tank, disconnect filter and unplug aerator

### **RETURNING TO YOUR UNIT:**

- ☐ Make your bed with your newly dried linens. Bags should remain sealed until 30 days after the last treatment and the unit is clear of bedbugs. You may remove clothing if you reseal the bags.